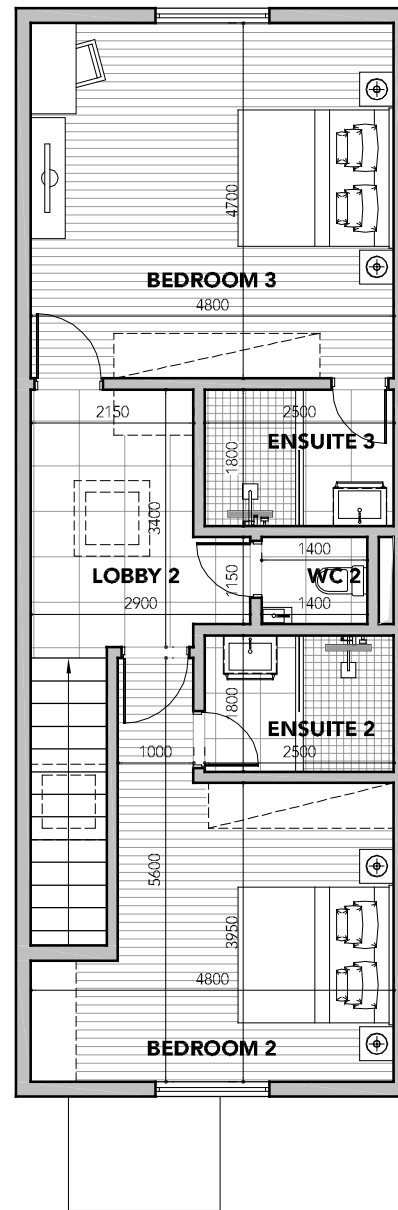


### DUPLEX - GROUND FLOOR PLAN (OPTION 1)

Scale 1:100  
Gross covered area: 72.0m<sup>2</sup>



### DUPLEX - FIRST FLOOR PLAN

Scale 1:100  
Gross covered area: 68.2m<sup>2</sup>

	ROOM NAMES	NET AREAS (m <sup>2</sup> )
GROUND FLOOR PLAN	TERRACE	14.4m <sup>2</sup>
	LIVING	21.1m <sup>2</sup>
	KITCHEN	19.0m <sup>2</sup>
	LOBBY 1	4.1m <sup>2</sup>
	WC 1	2.6m <sup>2</sup>
	STAIRS	4.5m <sup>2</sup>
	TOTAL	65.7m <sup>2</sup>
FIRST FLOOR PLAN		
	BEDROOM 1	17.9m <sup>2</sup>
	ENSUITE 1	4.5m <sup>2</sup>
	LOBBY 2	8.8m <sup>2</sup>
	WC 2	1.6m <sup>2</sup>
	BEDROOM 2	22.6m <sup>2</sup>
	ENSUITE 2	4.5m <sup>2</sup>
	TOTAL	59.9m <sup>2</sup>

[illegible]

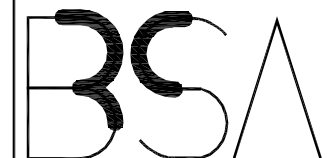
Notes:

1. All dimensions are in mm.
2. Written dimension to be followed.
3. Contractor is to verify all dimensions before any work is put in hand.
4. Any discrepancies to be brought to immediate notice of the Architect.
5. This drawing is a property of Black Sun Architects. The drawing as a whole or any parts thereof shall not be reproduced or used without prior permission of the company.

[illegible]

### Origin of Drawing

Issued to	N	Revision Index					
Client							
Project Manager							
Quantity Surveyor							
Structural Engineer							
M & E Engineer							
Interior Designer							
Landscape Architect							
Land Surveyor							
Kitchen Consultant							
Lighting Consultant							
General Contractor							
Subcontractor							



Lot 4, Zone Industrielle  
Geoffroy, Bambous  
Republic of Mauritius

**Phone** +230 452 0992  
**Fax** +230 452 0248  
**E-Mail** [info@blacksunarchitects.com](mailto:info@blacksunarchitects.com)

<b>Client</b>	Trinidad Résidence Ltée ....
<b>Project</b>	Résidences Trou Aux Biches ...
<b>Drawing</b>	Duplex Ground & First Floor Plans (Opt. 1)
<b>Date</b>	11.05.16
<b>Scale</b>	1:100
<b>File no.</b>	1221
<b>Checked by</b>	BD
<b>Drawing no.</b>	D-101
<b>Drawn by</b>	AL
<b>Revision</b>	SK3

**FOR INFORMATION**